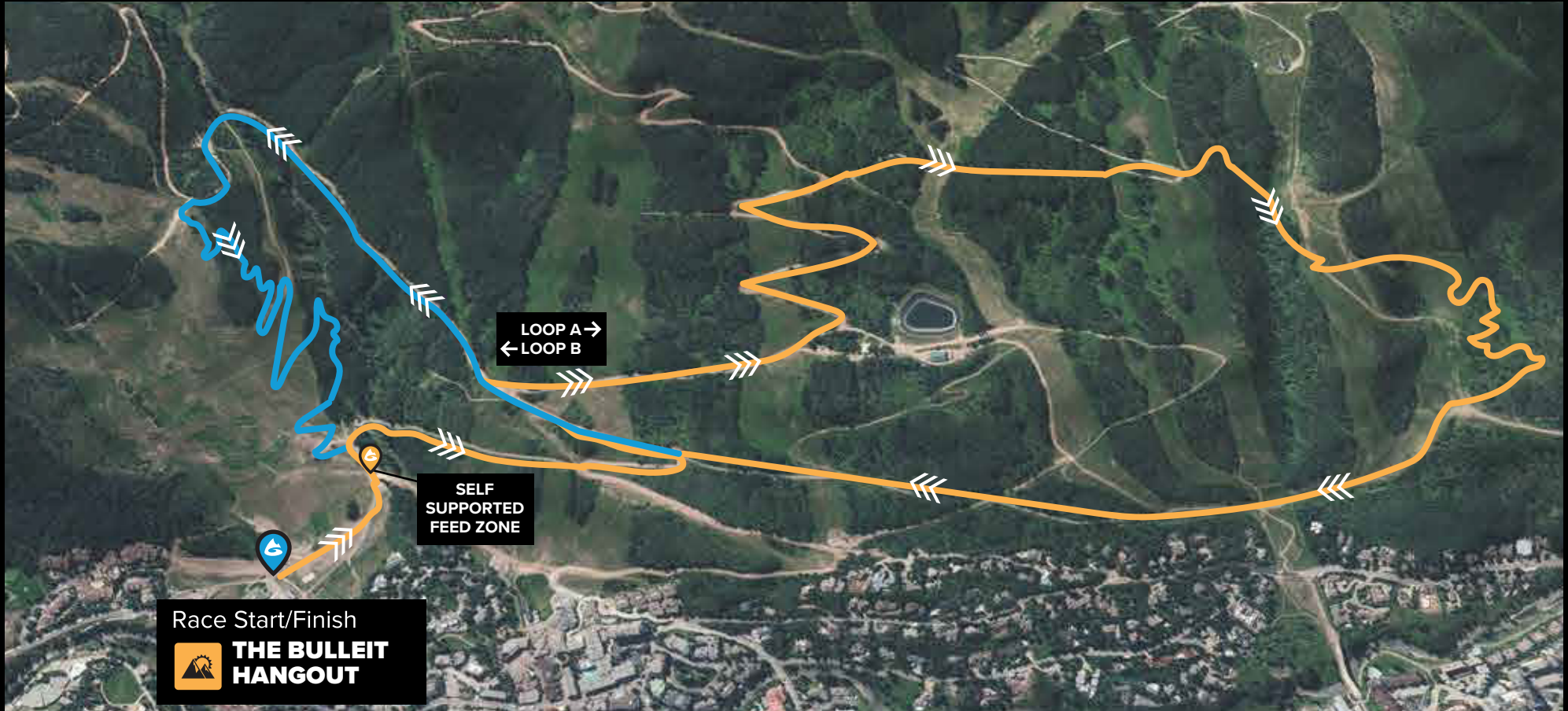


LUCID



XC MOUNTAIN BIKE



MAP KEY & COURSE STATS

— LOOP A

— LOOP B

START/FINISH ELEVATION: 8,220'

1 LAP: DISTANCE 6.8 MILES | 1,248' ELEVATION GAIN

2 LAPS: DISTANCE 13.6 MILES | 2,496' ELEVATION GAIN

3 LAPS: DISTANCE 20.4 MILES | 3,744' ELEVATION GAIN

The course will consist of a figure 8, split into two loops - A & B. Riders will start in Golden Peak, ride loop A, then ride loop B. This is considered one lap. Riders doing multiple laps will start their second/third lap at the bottom of Golden Gate trail adjacent to the Feed Zone. All racers will only cross the finish line once after doing the allotted laps per category.

• Course and distance are determined by snow melt and are subject to change.

mountaingames.com | [#gopromtngames](https://twitter.com/gopromtngames)